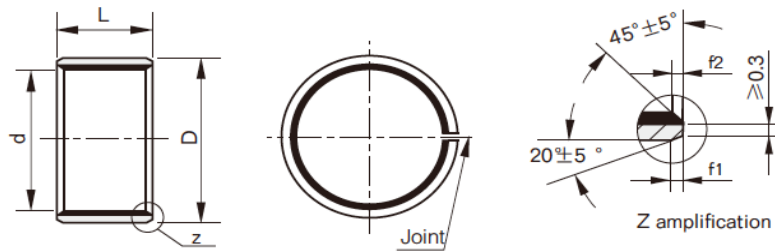


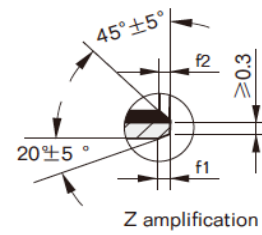
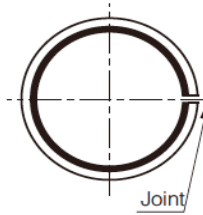
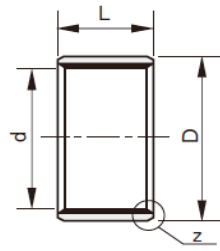
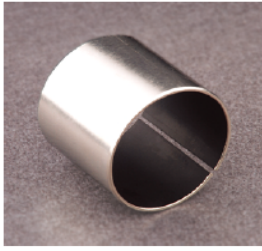
DU Inch Cylindrical Bushes



Unit: Inch

Part No.	Nominal Diameter		L +0.010 -0.010	ID After Fixed	Housing Bore (H7)	Shaft Dia (f7)	f1	f2
	D	d						
IB02DU03	3/16	1/8	3/16	0.1268	0.1878	0.1243	0.5±0.3	0.25±0.2
				0.1243	0.1873	0.1236	0.5±0.3	
IB03DU06	1/4	3/16	3/8	0.1893	0.2503	0.1865	0.5±0.3	0.25±0.2
				0.1867	0.2497	0.1858	0.5±0.3	
IB04DU06	5/16	1/4	3/8	0.2518	0.3128	0.2490	0.5±0.3	0.25±0.2
				0.2492	0.3122	0.2481	0.5±0.3	
IB05DU06	3/8	5/16	3/8	0.3143	0.3753	0.3115	0.5±0.3	0.25±0.2
IB05DU08			1/2	0.3117	0.3747	0.3106	0.5±0.3	0.25±0.2
IB06DU06	15/32	3/8	3/8	0.3769	0.4691	0.3740	0.6±0.3	0.25±0.2
IB06DU12			3/4	0.3742	0.4684	0.3731	0.6±0.3	0.3±0.2
IB07DU12	17/32	7/16	3/4	0.4394	0.5316	0.4365	0.6±0.3	0.3±0.2
				0.4367	0.5309	0.4355		
IB08DU06	19/32	1/2	3/8	0.5019	0.5941	0.4990	0.6±0.3	0.3±0.2
IB08DU08			1/2				0.6±0.3	0.3±0.2
IB08DU10			5/8	0.4992	0.5934	0.4980	0.6±0.3	0.3±0.2
IB08DU12			3/4				0.6±0.3	0.3±0.2
IB08DU14			7/8				0.6±0.3	0.3±0.2
IB09DU08	21/32	9/16	1/2	0.5644	0.6566	0.5615	0.6±0.3	0.3±0.2
IB09DU12			3/4	0.5617	0.6559	0.5605	0.6±0.3	0.3±0.2
IB10DU10	23/32	5/8	5/8	0.6270	0.7192	0.6240	0.6±0.3	0.3±0.2
IB10DU12			3/4	0.6242	0.7184	0.6230	0.6±0.3	0.3±0.2
IB10DU14			7/8				0.6±0.3	0.3±0.2
IB12DU08	7/8	3/4	1/2	0.7525	0.8755	0.7491	0.7±0.3	0.5±0.2
IB12DU12			3/4	0.7493	0.8747	0.7479	0.7±0.3	0.5±0.2
IB12DU16			1				0.7±0.3	0.5±0.2
IB14DU16	1	7/8	1	0.8775	1.0005	0.8741	0.7±0.3	0.5±0.2
				0.8743	0.9997	0.8729	0.7±0.3	0.5±0.2
IB16DU12	1.1/8	1	3/4	1.0025	1.1255	0.9991	0.7±0.3	0.5±0.2
IB16DU16			1				0.7±0.3	0.5±0.2
IB16DU24			1.1/2	0.9993	1.1247	0.9979	0.7±0.3	0.5±0.2
IB16DU6			3/8				0.7±0.3	0.5±0.2
IB18DU08	1.9/32	1.1/8	1/2	1.1278	1.2818	1.1238	0.7±0.4	0.5±0.3
IB18DU16			1	1.1240	1.2808	1.1226	0.7±0.4	0.5±0.3

DU Inch Cylindrical Bushes



Unit: Inch

Part No.	Nominal Diameter		L +0.010 -0.010	ID After Fixed	Housing Bore (H7)	Shaft Dia (f7)	f1	f2
	D	d						
IB20DU16	1.13/32	1.13/32	1	1.2528	1.4068	1.2488	0.7±0.4	0.5±0.3
IB20DU18			1.1/8					
IB20DU20			1.1/4	1.2490	1.4058	1.2472	0.7±0.4	0.5±0.3
IB20DU28			1.3/4					
IB22DU16	1.17*32	1.17*32	1	1.3778	1.5318	1.3738	0.7±0.4	0.5±0.3
				1.3740	1.5308	1.3722		
IB24DU16	1.21/32	1.21/32	1	1.5028	1.6568	1.4988	0.7±0.4	0.5±0.3
IB24DU20			1.1/4					
IB24DU24			1.1/2	1.4990	1.6558	1.4972	0.7±0.4	0.5±0.3
IB24DU32			2					
IB26DU24	1.25/32	1.25/32	1.1/2	1.6278	1.7818	1.6288	0.7±0.4	0.5±0.3
				1.6240	1.7808	1.6222		
IB28DU16	1.15/16	1.15/16	1	1.7535	1.9381	1.7487	1.8±0.6	0.5±0.3
IB28DU32			2	1.7489	1.9371	1.7471	1.8±0.6	0.6±0.3
IB30DU16	2.1/16	2.1/16	1	1.8787	2.0633	1.8737	1.8±0.6	0.6±0.3
IB30DU36			2.1/4	1.8739	2.0621	1.8721	1.8±0.6	0.6±0.3
IB32DU16	2.3/16	2.3/16	1	2.0037	2.1883	1.9987	1.8±0.6	0.6±0.3
IB32DU24			1.1/2					
IB32DU32			2	1.9989	2.1871	1.9969	1.8±0.6	0.6±0.3
IB32DU40			2.1/2					
IB36DU32	2.7/16	2.7/16	2	2.2573	2.4377	2.2507	1.8±0.6	0.6±0.3
				2.2509	2.4365	2.2489	1.8±0.6	0.6±0.3
IB40DU48	2.11/16	2.11/16	3	2.5077	2.6881	2.5011	1.8±0.6	0.6±0.3
			2	2.5013	2.6869	2.4993		
IB44DU32	2.15/16	2.15/16	3.1/2	2.7566	2.9370	2.7500	1.8±0.6	0.6±0.3
IB44DU56			2	2.7502	2.9358	2.7482	1.8±0.6	0.6±0.3
IB48DU32	3.3/16	3.3/16	3	3.0068	3.1872	3.0000	1.8±0.6	0.6±0.3
IB48DU48			2.1/2	3.0002	3.1858	2.9982	1.8±0.6	0.6±0.3
IB56DU40	3.11/16	3.11/16	3.3/4	3.5068	3.6872	3.5000	1.8±0.6	0.6±0.3
IB56DU60			2	3.5002	3.6858	3.4978	1.8±0.6	0.6±0.3
IB64DU32	4.3/16	4.3/16	3	4.0068	4.1872	4.0000	1.8±0.6	0.6±0.3
IB64DU48				4.0002	4.1858	3.9978	1.8±0.6	0.6±0.3
IB80DU48	5.3/16	5.3/16	3	5.0056	5.1860	4.9986	1.8±0.6	0.6±0.3
				4.9988	5.1844	4.9961		
IB96DU48	6.3/16	6.3/16	3	6.0070	6.1874	6.0000	1.8±0.6	0.6±0.3
				6.0002	6.1858	5.9975		